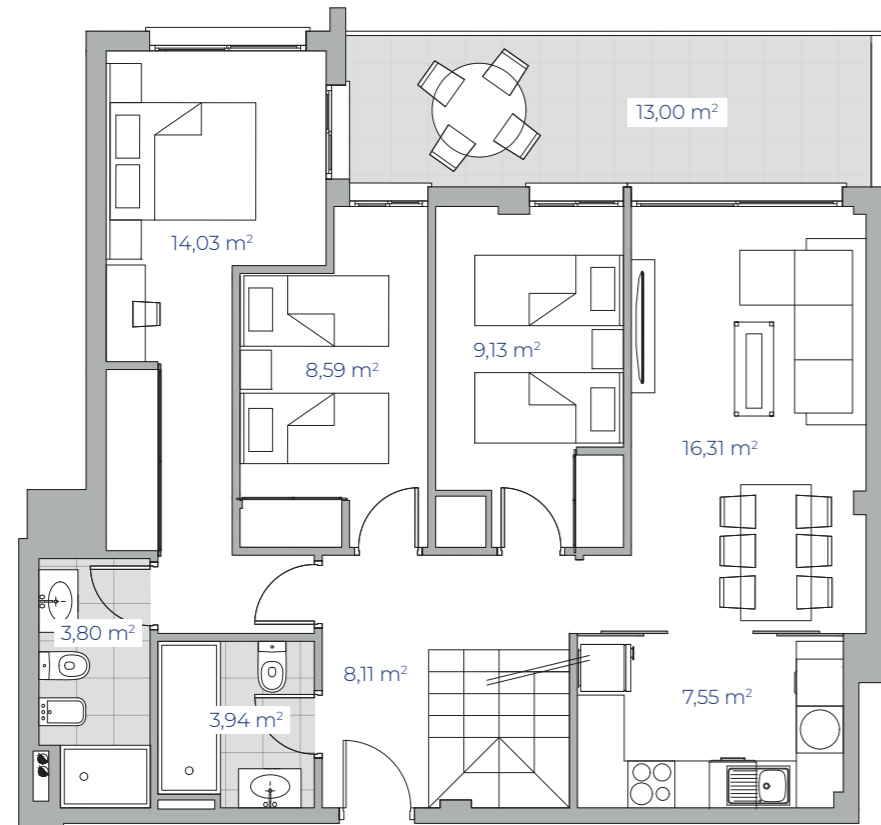




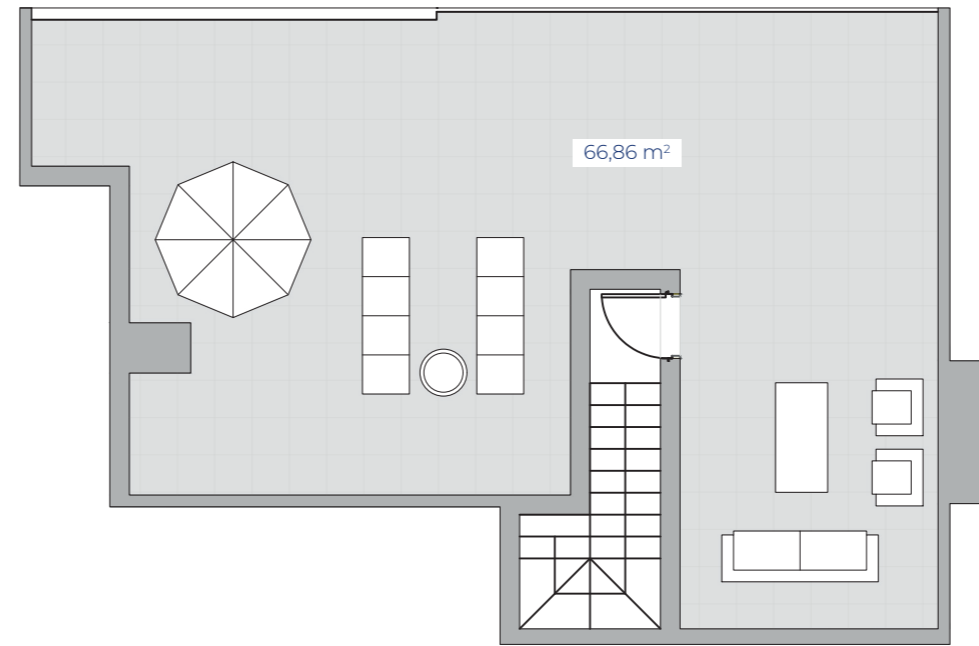
VIVIENDA TIPO K
PLANTA 2 - ESCALERA 1

Superficies Aproximadas	m ²
Total Superficie Útil Vivienda	80,16
Total Superficie Construida con elementos comunes	110,51
Total Superficie de Venta	184,11

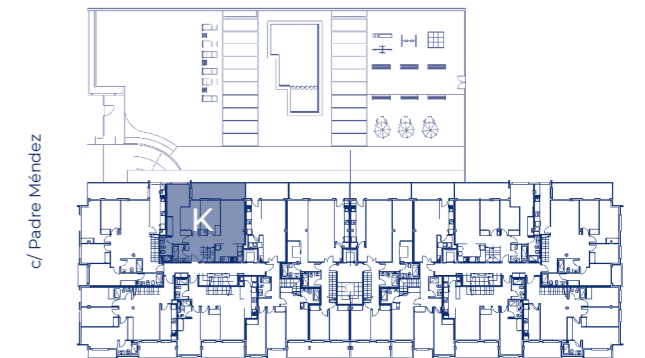


ESC 1:100

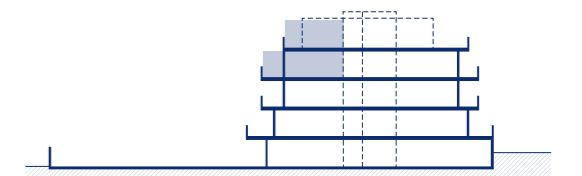
P2-E1-K



PLANTA 2



c/ Padre Méndez



ESTUDIO DE ARQUITECTURA: