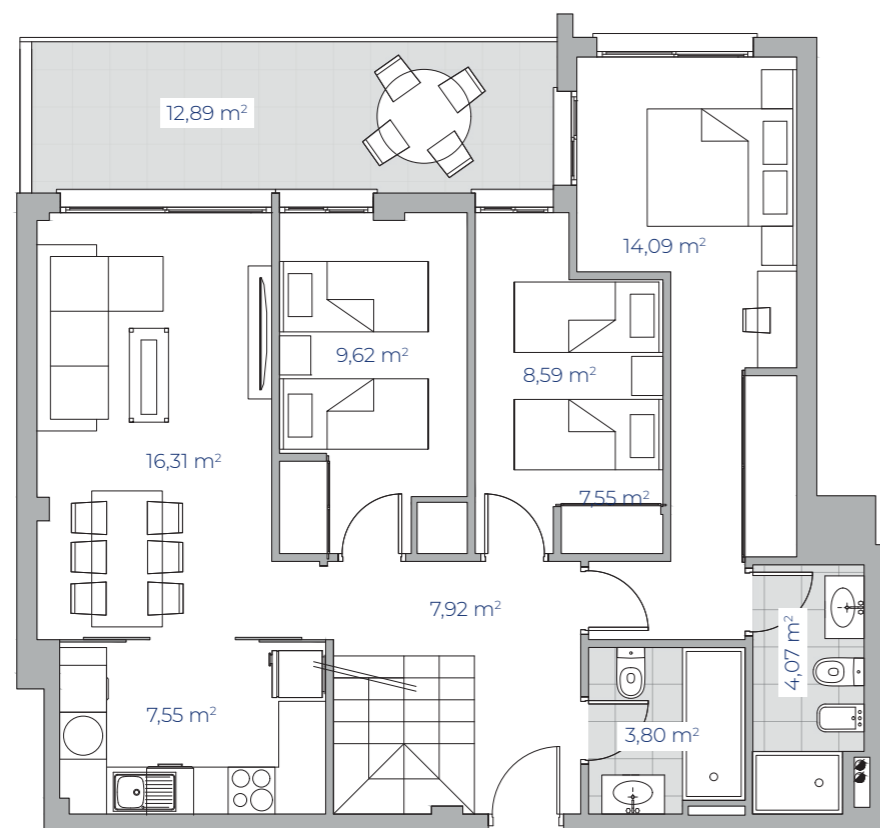




VIVIENDA TIPO K

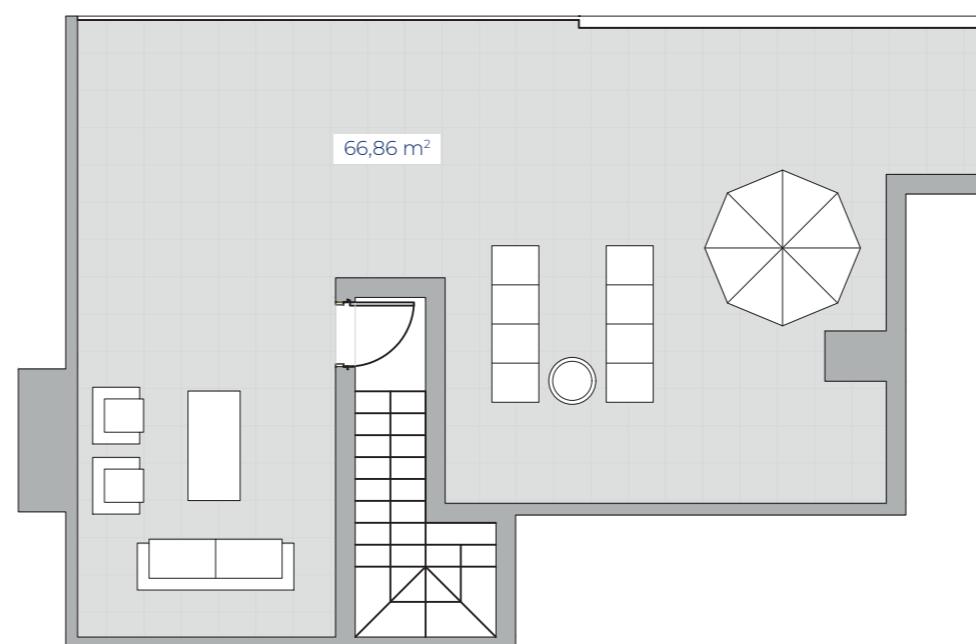
PLANTA 2 - ESCALERA 3

Superficies Aproximadas	m ²
Total Superficie Útil Vivienda	80,50
Total Superficie Construida con elementos comunes	110,51
Total Superficie de Venta	184,11

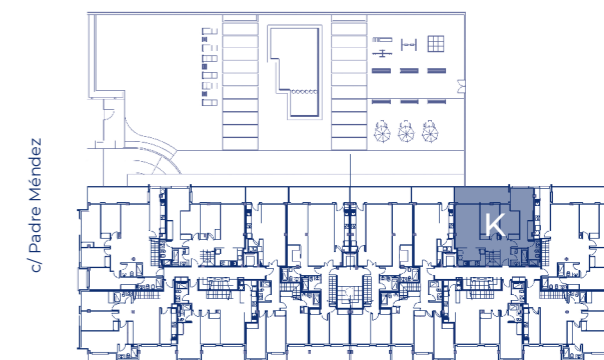


ESC 1:100

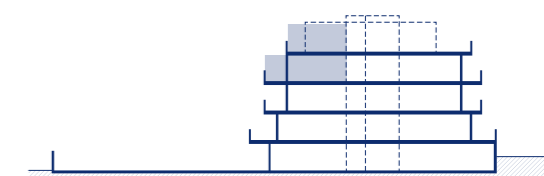
P2-E3-K



PLANTA 2



c/ Padre Méndez



ESTUDIO DE ARQUITECTURA: